

NORTH
 **BASEMENT PLAN**


Evacuation
 Assembly

Quad

Evacuation
 Assembly

Foreign Languages Building



Area of Rescue Assistance



Storm Refuge Area



708 S MATHEWS, URBANA

NAME AND LOCATION OF STRUCTURE:

FILE NAME:

B0173-00.DWG

FLOOR:

BASEMENT

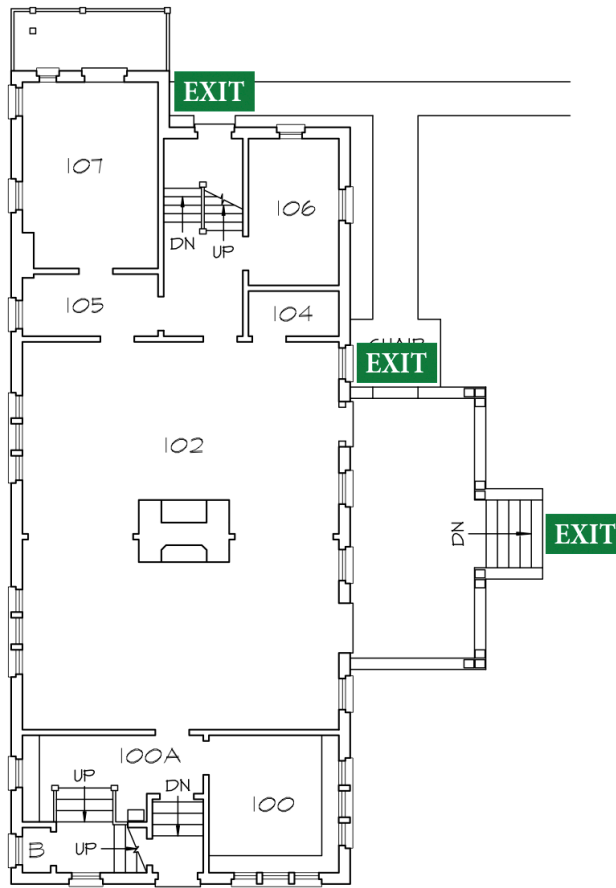
DATE PRINTED:

13 DEC 2011

UNUC BLDG. #

#0173



UNIVERSITY OF ILLINOIS AT URBANA-CHAMPAIGN



NORTH
 **FIRST FLOOR PLAN**
 0 8 16 24 32 FEET

**Evacuation
 Assembly**
 Quad

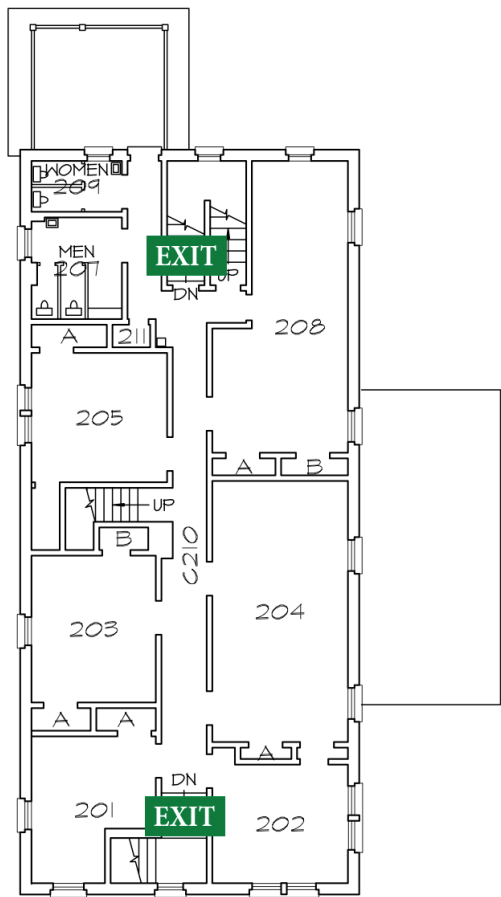
**Evacuation
 Assembly**
 Foreign Languages Building

 **Area of Rescue Assistance**
 **Storm Refuge Area**



NAME AND LOCATION OF STRUCTURE:
708 S MATHEWS, URBANA
UNIVERSITY OF ILLINOIS AT URBANA-CHAMPAIGN



FILE NAME: B0173-01.DWG	FLOOR: FIRST
DATE PRINTED: 13 DEC 2011	UIUC BLDG. # #0173



NORTH
 **SECOND FLOOR PLAN**


**Evacuation
 Assembly**
 Quad

**Evacuation
 Assembly**
 Foreign Languages Building

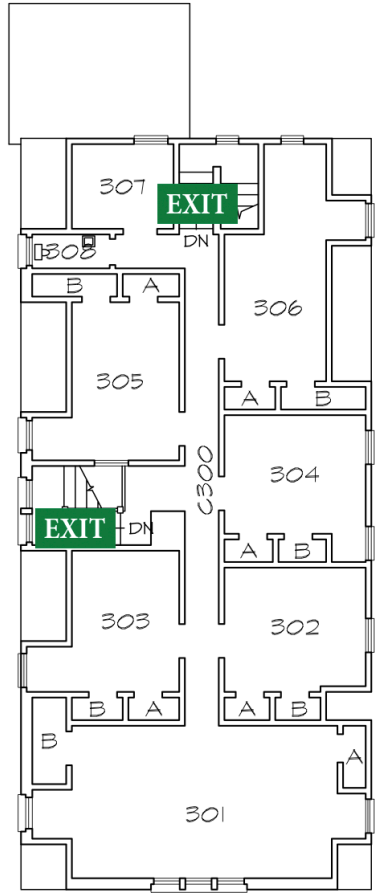
 **Area of Rescue Assistance**
 **Storm Refuge Area**



NAME AND LOCATION OF STRUCTURE:
708 S MATHEWS, URBANA

UNIVERSITY OF ILLINOIS AT URBANA-CHAMPAIGN



FILE NAME: B0173-02.DWG	FLOOR: SECOND
DATE PRINTED: 13 DEC 2011	URUC BLDG. # #0173



NORTH
THIRD FLOOR PLAN
 0 8 16 24 32 FEET

**Evacuation
 Assembly**
 Quad

**Evacuation
 Assembly**
 Foreign Languages Building

 **Area of Rescue Assistance**
 **Storm Refuge Area**



NAME AND LOCATION OF STRUCTURE:
708 S MATHEWS, URBANA
UNIVERSITY OF ILLINOIS AT URBANA-CHAMPAIGN

FILE NAME: B0173-03.DWG	FLOOR: THIRD
DATE PRINTED: 13 DEC 2011	UNUC BLDG. # #0173