



NORTH
FIRST FLOOR PLAN
 0 8 16 24 32 FEET

STEAM VAULT BELOW STAIRS/
 ENTRY WAY

**Evacuation
 Assembly**
 Loomis Lab

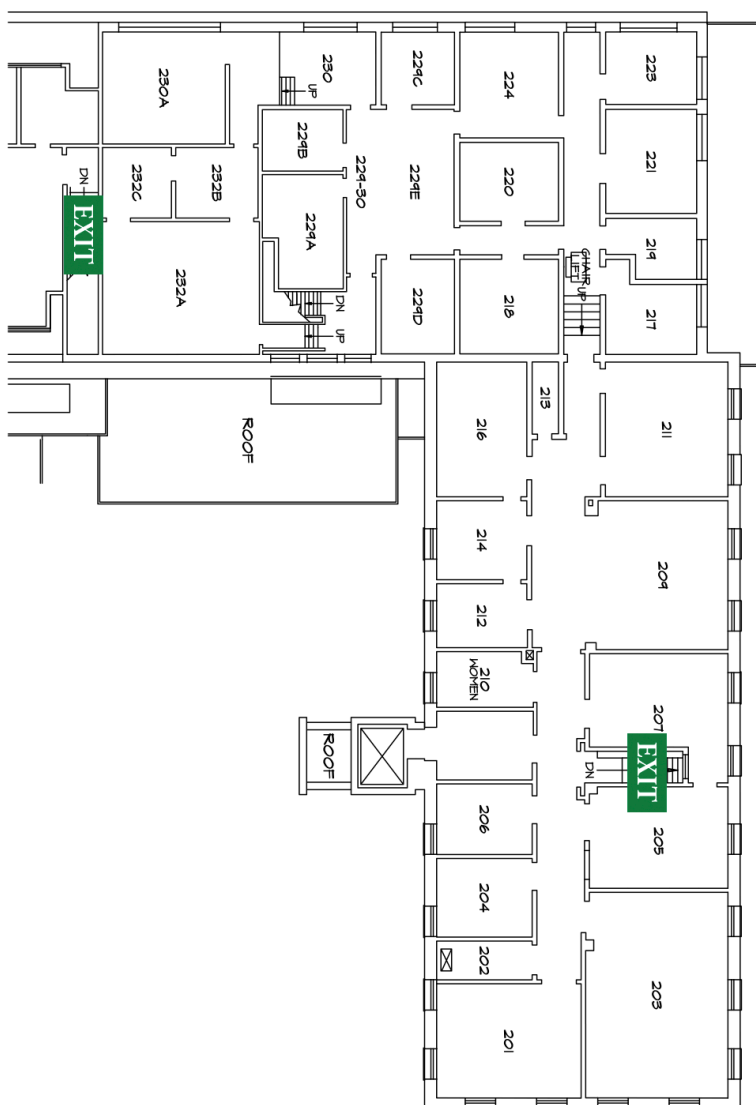
 Area of Rescue Assistance
 Storm Refuge Area

**facilities &
 SERVICES**
 PLANNING DIVISION

NAME AND LOCATION OF STRUCTURE:
NUCLEAR ENGINEERING LABORATORY

FILE NAME:
 B0117-01.DWG
 DATE PRINTED:
 13 DEC 2011

FLOOR:
FIRST
 UUC BLDG. #
#0117



NORTH
 0 8 16 24 32 FEET
SECOND FLOOR PLAN



Area of Rescue Assistance
 Storm Refuge Area

Evacuation Assembly
 Loomis Lab



NAME AND LOCATION OF STRUCTURE:
NUCLEAR ENGINEERING LABORATORY

FILE NAME:
 B0117-02.DWG
 DATE PRINTED:
 13 DEC 2011

FLOOR:
SECOND
 UUC BLDG. #
#0117